



FACEBOOK



Scan QR Code to join  
HIFIMAN on FaceBook

HE-R9





## Table of Contents

---

01-02	Message from the Founder
03-04	HIFIMAN Topology Diaphragm Technology
05-06	Elegance Outside, Strength Inside
07-08	Large Ear Cups with Crimson Red
09-10	Tranquility Pads
11-12	Cable Connections
13-14	Package Details
15	Headband Adjustment & Replacing Ear Pads
16	Care and Maintenance
16	Bluemini/USB Dongle
17	Operation Guide
18	Precautions for Use
19	Himalaya DAC Embedded
20	Multiple HD Audio Protocols
20	Specifications
21	Package Contents
24	HIFIMAN Limited Warranty



## Message from the Founder

Thank you for your purchase of a HIFIMAN product. We take great pride in offering audio products that provide best-in-class performance and value.

Though it seems like only yesterday when, as a passionate audiophile, I started HIFIMAN, we just finished our first decade in business and eagerly look forward to an exciting future. The company continues to grow at a rapid pace, and the HIFIMAN brand is one of the most respected in the industry.

Even with our success, two things that never change are my love of music and my commitment to creating products that recreate the experience of hearing a live performance. I am joined by many others in the company who share my passion and in turn, we humbly share our passion with you.

Thank you again for your purchase. I hope you will find this guide a useful tool for learning about your product, ultimately helping you enjoy countless hours of pleasure.

Happy listening,

*Fang*

Dr. Fang Bian,  
Founder and CEO

## HIFIMAN Topology Diaphragm Technology



Topology Diaphragm is the name used to describe the technology first developed for our In-Ear Monitors.

The name comes the way the technology works: it is made by applying nano scale particles to the diaphragm in layers of assorted shapes and patterns, thereby allowing for a high level of optimization that has a noticeably positive effect on the diaphragm's audio characteristics.

The inspiration for the topological diaphragm originated from Dr. Fang's PhD research, which illustrated that "different nanomaterials have different structures." Subsequently, the characteristics are not the same.

The result was a range of dynamic IEM drivers, but the HE-R9 is a new product with the technology on a comparatively large-scale driver.



## Elegance Outside, Strength Inside

The exterior of the headband is covered by high-standard leather, giving it a soft and elegant appearance. The inside is high-grade memory foam, selected to achieve the most comfortable fit and elasticity. The headband skeleton itself is made of solid steel.

The structure is both lightweight and strong, robust yet delicate, and designed to convey detail and musicality that is unmatched in the market.





## Large Ear Cups for Superior Acoustics

The large internal space of the HE-R9's cup affords substantial spatial volume and the necessary breathing room for the powerful driver to sound its best. The crimson red ear cups offers exceptional tuning, with outstanding sound quality that combines the best attributes of closed- and open-back headphones.



## Tranquility Pads

The HE-R9's "Tranquility" ear pads feature high quality leather on the outside, which uses a ring-shaped inner surface to absorb sound and prevent sound leakage through the sides of the ear pad. This forces the sound to target the listener's ear. The contact edge is constructed of highly permeable material to ensure optimal head comfort.

The outcome of this advanced engineering? A transparent, coherent, and wide soundstage, with maximum comfort.



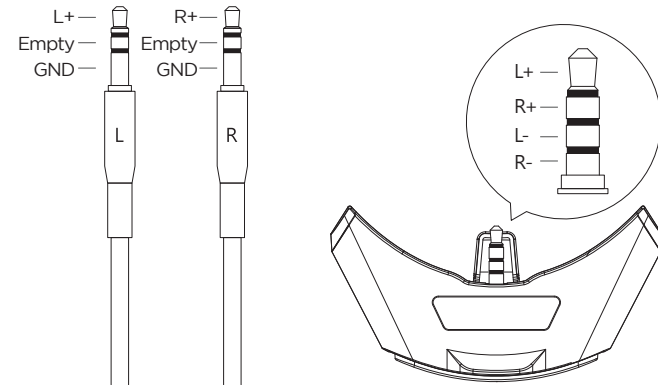


## Cable Connections

The socket accommodates both dual-sided 3.5mm TRS and a single-sided 3.5mm TRRS connections.\* (Left socket.) The Bluemini\* dongle easily connects to the left socket for Bluetooth connectivity.

- \* The single-sided 3.5mm TRRS cable is not included with the HE-R9.
- \* Bluemini dongle is available with the wireless version of the HE-R9 or can be purchased separately.

Always confirm compatibility before attempting to use aftermarket cables. For details, please refer to the following illustration of the stock cable included with the HE-R9.



**Dual-sided 3.5mm cable  
(3.5mm TRS connection)**

**Bluemini Dongle  
(3.5mm TRRS connection  
to the left earcup.)**

**HE-R9 is not compatible with TS cable**





## Package Details

### Specifications

Frequency response range: 15-35KHz

Impedance: 32 $\Omega$

Sensitivity: 100dB

Weight: 328g

Input: 3.5mm

3.5mm TRRS (left only)

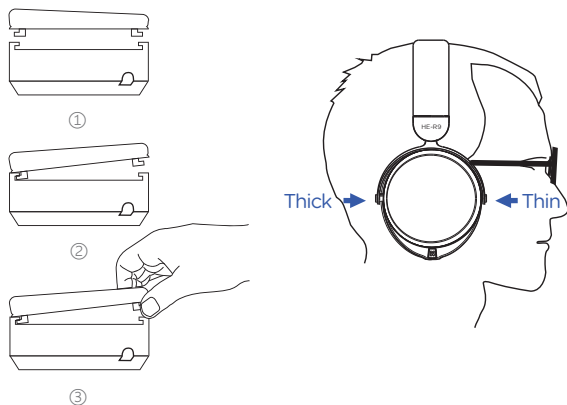
## Headband Adjustment

For the best possible fit, use the two adjustment blocks to adjust the position of the headband strap.



## Replacing Ear Pads

To remove the ear pads, locate the clips on the inside of the pad, and use two fingers to gently bend them in and slip them out. To install new pads, simply align the ear pad with the mounting ring, and gently bend the clips so they slot in their appropriate locations.



## Care and Maintenance

The headphones benefit from break-in to achieve optimum performance. Usually, this takes up to 150 hours. Until then, there is nothing special you need to do other than enjoy your headphones.

Wipe the surfaces (ear pads, cups) with a microfiber cloth and store the headphone in a dry, cool, and safe place (away from dust, heat, humidity, sunlight, younger kids, and pets if possible).

To prolong the life of the headband, periodically wipe it with a clean, dry cloth.

Avoid exposure to extreme heat or cold.

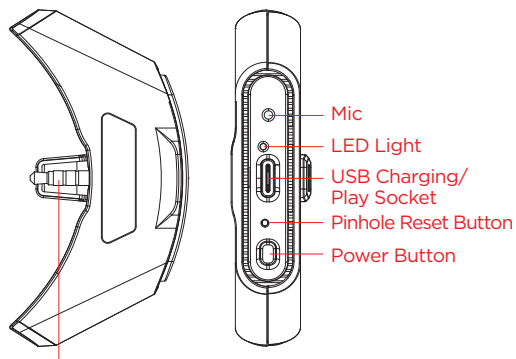
Do not use any headphone while driving or operating machinery.

Do not use volatile substances, including alcohol, acetone, gasoline or dish detergent, to clean the headphone.

## Bluemini/USB Dongle

Small, powerful and versatile with maximum functionality. Bluemini turns the compatible headphone into a wireless Bluetooth headphone offering superb dynamics and crystal-clear audio. You can also use Bluemini as an integrated amp and DAC by connecting to a phone or computer via a USB-C cable. Bluemini will act as the perfect companion integrated amplifier and DAC for true audiophile grade sonics. Superb dynamics, clarity and an analog tube-like smoothness to satisfy the most demanding music fans.

## Operation Guide



3.5mm Balanced Plug

In playback mode, tap the power button once to start / pause playback. To answer / finish a call, press the power button once. To reject, please press and hold the power button 2 seconds.

- \* When using a computer as the audio input device, there is no need to install drivers when the OS is WIN10 or MacOS. For WIN 8 and older OS, not all devices can be connected by USB mode.
- \* To connect with Android phones, you will need a compatible cable. If connected to a portable device including mobile phones, the lack of a power supply may result in faster than usual battery drainage. Not all Android phones can support OTG audio. Iphones are currently not compatible due to power limitation.
- When first connecting to a source via Bluetooth, press the power button for one-to-two seconds. Once the blue light flashes twice to indicate that the power is on, press the power button twice to enter the pairing mode. The light will alternately flash blue and green. At this point, check for it in the device's Bluetooth connection list. Click Connect to complete the pairing

- To connect a paired Bluetooth audio output device, simply press the power button for one-to-two seconds. The blue light will continue to flash at intervals. If the previously paired Bluetooth device is turned on, it will automatically attempt to connect.
- Press power button for five seconds to turn it off.
- To charge, connect the USB charging cable to both the power supply and the Bluemini. Charging will occur whether or not the Bluemini is on. The light will remain red. When turned on the light will flash red and blue while charging and once fully charged the light will flash green and blue.
- To enable the USB playback mode, connect the audio device with a USB cable to enter USB play mode. The light will flash red and blue in this mode.
- In the event of a software issue, press and hold the Pinhole Reset Button for six seconds to restore factory settings.

N.B.: USB playback mode can be used only if the audio playback device and USB cable support audio playback. The choice of USB cable may affect playback quality.

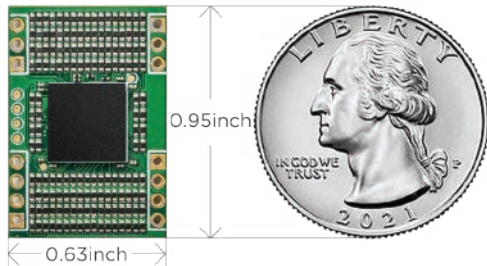
## Precautions for Use

- Bluemini R2R does not work with official IOS phones or tablets. If you need further assistance, please contact HIFIMAN Customer Service.
- Microphone feature is not available in USB DAC mode.
- Due to the limitation of Bluetooth wireless technology, the audio of the media playback device may experience a slight delay. Sound and images may not be synchronized when watching a video or playing a game.
- Use the Bluemini only in locations that allow Bluetooth wireless transmission.
- Bluetooth wireless technology typically works within 10 meters. Reception is affected by such factors as obstacles, electromagnetic environments, and other factors..

- The Bluemini is Bluetooth-compliant and the device connected to the Bluemini must also comply with the Bluetooth standard. HIFIMAN does not guarantee that all Bluetooth devices will be connected to the Bluemini.
  - The time for connecting the Bluemini to different devices may vary.
  - The Bluemini can only be charged using the supplied USB cable.
  - The battery may be exhausted if the Bluemini is not used for a long time. If the battery is running out too fast, it may need to be replaced. Please contact your nearest HIFIMAN dealer.
  - For maximum performance, the battery should be charged a minimum of once every 90 days.
- \* The Bluemini includes electronic components and a battery. When recycling, please contact your local sanitation department for disposal and recycling requirements.

## Himalaya DAC Embedded

Bluemini R2R is enabled by ultra-small Himalaya R2R DAC, HIFIMAN custom created module, which features low-energy consumption and high sampling rates.



## Multiple HD Audio Protocols

The Bluemini supports the current mainstream HD music transmission protocols, including LDAC™, aptX™, aptX-HD™ and more, ensuring it is fully compatible with the majority of HD playback devices on the market.



Qualcomm®  
aptX™ HD



Qualcomm®  
aptX™



\* LDAC™ and the LDAC™ logo are registered trademarks of Sony Corporation.

\* aptX™ and aptX-HD™ and their logo are registered trademarks of Qualcomm Incorporated.

\* Bluetooth and its logo are registered trademarks of Bluetooth SIG.

## Specifications

Bluetooth Version: Bluetooth 5.0  
 Frequency Response: 20Hz-20kHz  
 Battery Life: 6-7 Hours  
 Weight: 25g  
 With Built-in Microphone







## Package Contents

- Pair of headphone x 1
- 3.5mm plug headphone cable (1.5m) x 1
- USB C to USB A cable x 1
- 3.5mm to 6.35mm Adapter x 1
- Bluemini R2R x 1
- Ear pads (installed on the headset) x 1 pair

## FCC STATEMENT

1. This device complies with Part 15 of the FCC Rules. Operation is subject to the following two conditions:
  - (1) This device may not cause harmful interference, and
  - (2) This device must accept any interference received, including interference that may cause undesired operation.
2. Changes or modifications not expressly approved by the party responsible for compliance could void the user's authority to operate the equipment.

## FCC Radiation Exposure Statement:

The device has been evaluated to meet general RF exposure requirement. The device can be used in portable exposure condition without RF striction.

NOTE: This equipment has been tested and found to comply with the limits for a Class B digital, pursuant to Part 15 or the FCC Rules. These limits are designed to provide reasonable protection against harmful interference in a residential installation. This equipment generates, uses and can radiate radio frequency energy and, if not installed and used in accordance with the instructions, may casue harmful interference to radio communications, However, there is no guarantee that interference will not occur in a particular installation. If the equipment does cause harmful interference to radio or television reception, which can be determined by turning the equipment off and on, the user is encouraged to try to correct the interference by one or more of the following measures:

- Reorient or relocate the receiving antenna.
- Increase the separation between the equipment and receiver.
- Connect the equipment into an outlet on a circuit different from that to which the receiver is connected.
- Consult the dealer or an experienced radio / TV technician for help.

## HIFIMAN Limited Warranty

Your product is warranted for a period of one year beginning with the original date of purchase. If you join HIFIMAN on Facebook, your product warranty will be extended for an additional six months. Please contact HIFIMAN customer service if you need any assistance.

The dated sales or delivery receipt is your proof of purchase. You may be required to provide proof of purchase as a condition of receiving warranty service so please keep it handy.

If your product is under warranty and malfunctions occur, please contact HIFIMAN customer service or your authorized dealer. If necessary, and at the discretion of HIFIMAN, the company will provide a warranty repair or replacement of your product.

Caution: do not disassemble or modify the product in any way. Tampering with or modifying your HIFIMAN product will void its warranty.

This Limited Warranty does not apply to :

1. Defective or discolored parts if the damages are caused by fluids, dirt, missing keys, broken plastic parts or improper use.
2. Damage caused by misuse with another product.
3. Use of the product for other than its normal intended use, including, without limitation, failure to use the product in accordance with the supplied "Owner's Guide"
4. Damage caused by accident, abuse, neglect or misuse.
5. If you do not have a valid dated receipt showing proof of purchase.
6. Damage caused by services/repairs or other modifications to the system carried out by anyone other than HIFIMAN or an authorized HIFIMAN distributor or dealer.
7. Damage caused by self-repair or if the unit has been disassembled or modified in any way.



HIFIMAN guarantees your satisfaction and will do everything reasonable to achieve that. If you have any questions or concerns with your product, simply contact your authorized dealer or HIFIMAN directly (if purchased from us) and explain the issue in detail. Should a return be required, a RA# will be issued. Return shipping to HIFIMAN or authorized service facility will be at the owner's expense.

The warranty applies to the first purchaser and is not transferable. Should you need warranty service please contact your authorized HIFIMAN dealer. Or email us directly at [customerservice@HIFIMAN.com](mailto:customerservice@HIFIMAN.com)

If you have any concerns with your product: please contact us to explain the issue in detail. If a return/refund is required, a RA# will be issued. Return shipping to HIFIMAN or authorized service facility is done at the owner's expense.

**For any further information or questions, please contact your authorized HIFIMAN dealer. Or email us directly at [customerservice@HIFIMAN.com](mailto:customerservice@HIFIMAN.com).**

 [facebook.com/hifimanelectronics](https://facebook.com/hifimanelectronics)

 [twitter.com/hifimanofficial](https://twitter.com/hifimanofficial)

 [www.hifiman.com](http://www.hifiman.com)

 **HIFIMAN**  
Innovating the Art of Listening

